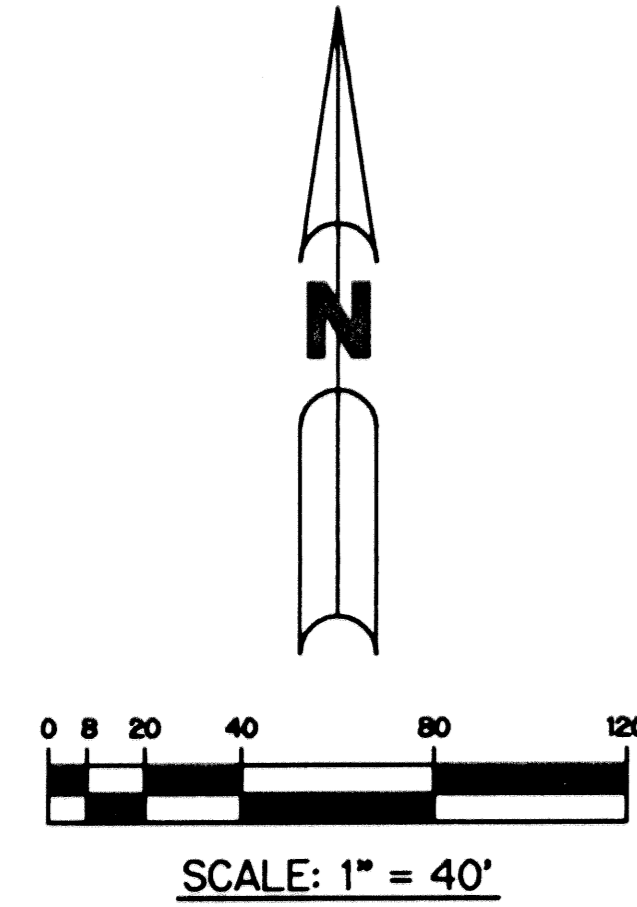


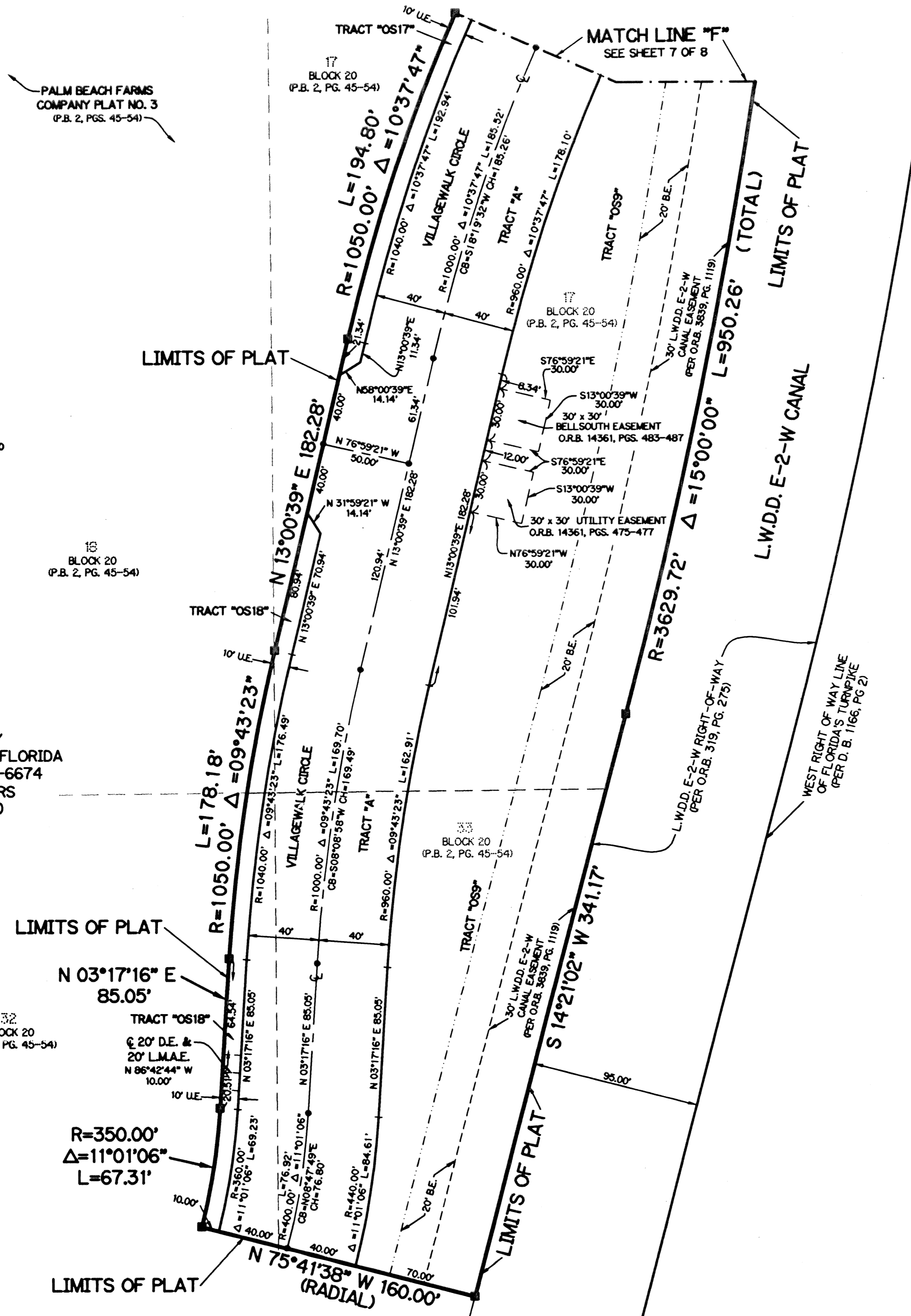
VILLAGEWALK OF WELLINGTON - PLAT TWO

BEING A REPLAT OF A PORTION OF TRACTS 49, 50, 51, 52, 62, 63 AND 64, BLOCK 16, AND TRACTS 1, 16, 17, 18, 31 AND 32, BLOCK 20, ACCORDING TO THE PLAT OF PALM BEACH FARMS COMPANY PLAT NO. 3 AS RECORDED IN PLAT BOOK 2, PAGES 45 THROUGH 54, INCLUSIVE, OF THE PUBLIC RECORDS OF PALM BEACH COUNTY, FLORIDA. LYING IN SECTIONS 8 AND 17, TOWNSHIP 44 SOUTH, RANGE 42 EAST. VILLAGE OF WELLINGTON, PALM BEACH COUNTY, FLORIDA

SHEET 8 OF 8 JANUARY, 2003



THIS INSTRUMENT PREPARED BY
DAVID L. SMITH, P.S.M. 4951, STATE OF FLORIDA
LAWSON, NOBLE AND WEBB, INC., LB-6674
ENGINEERS PLANNERS SURVEYORS
420 COLUMBIA DRIVE, SUITE 110
WEST PALM BEACH, FLORIDA

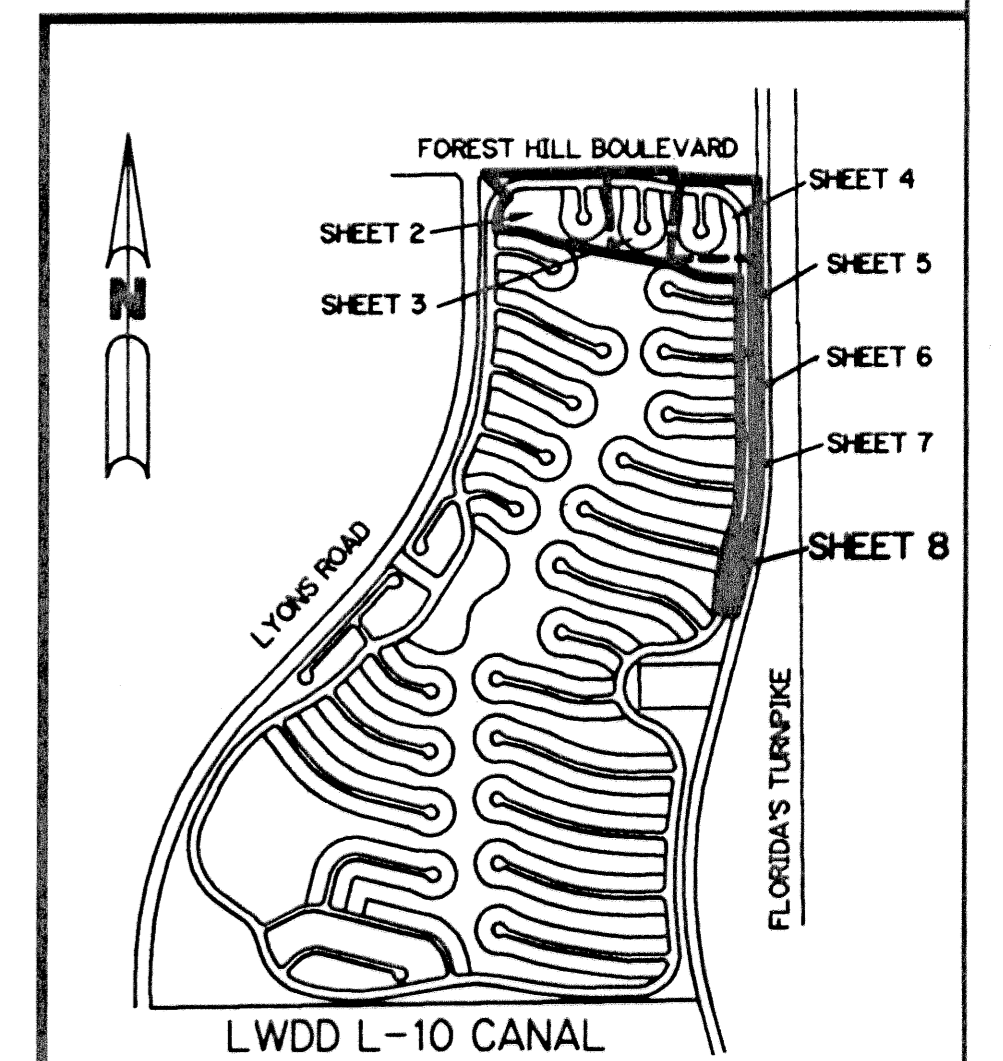


SUNSHINE STATE PARKWAY
(FLORIDA'S TURNPIKE)
WIDTH VARIES

CENTERLINE OF
SUNSHINE STATE PARKWAY
AS SHOWN ON RIGHT-OF-WAY MAP
OF FLORIDA'S TURNPIKE
STA. 2451+34.54 TO STA. 2559+79.07
CONTRACT NO. 3.3, SHEET 10 OF 13
PREPARED BY GANNETT, FLEMING,
CORDRY AND CARPENTER, INC.

LEGEND:

- - PERMANENT REFERENCE MONUMENT, LB #6674
- - PERMANENT CONTROL POINT, LB #6674
- Δ - DELTA ANGLE
- C - CENTERLINE
- BE - BUFFER EASEMENT
- CB - CHORD BEARING
- CH - CHORD LENGTH
- D.B. - DEED BOOK
- D.E. - DRAINAGE EASEMENT
- FPL - FLORIDA, POWER AND LIGHT
- L - ARC LENGTH
- L.A.E. - LIMITED ACCESS EASEMENT
- L.M.A.E. - LAKE MAINTENANCE ACCESS EASEMENT
- L.M.E. - LAKE MAINTENANCE EASEMENT
- L.W.D.D. - LAKE WORTH DRAINAGE DISTRICT
- N.R. - NOT RADIAL
- N.T.S. - NOT TO SCALE
- O.R.B. - OFFICIAL RECORD BOOK
- P.B. - PLAT BOOK
- P.G.S. - PAGES
- P.O.B. - POINT OF BEGINNING
- P.O.C. - POINT OF COMMENCEMENT
- P.R.M. - PERMANENT REFERENCE MONUMENT
- P.S.M. - PROFESSIONAL SURVEYOR AND MAPPER
- R - RADIUS
- RAD - RADIAL
- R/W - RIGHT-OF-WAY
- STA. - STATION
- S.T. - SURVEY TIE
- TYP. - TYPICAL
- U.E. - UTILITY EASEMENT
- V.E. - VILLAGEWALK EASEMENT
- - - - - INDICATES COMMON LOT LINE
- OS - TRACT NUMBER (TYP.)
- OS17 - PALM BEACH FARMS COMPANY PLAT NO. 3 P.B. 2, PGS. 45-54



LOCATION & KEY MAP
SEC. 8 & 17 TWP. 44 S RGE. 42 E